

# Hydrangea paniculata ‘Dharuma’ Acc: 773

**Synonyms:** No synonyms found.

**Awards:** No awards found.

**Patents:** No patents found.

**Description:**

**Height x Width:** 1.2 x 1.2 m

**Habit:** Slow growing, compact and rounded cultivar that is early flowering.

**Stems & leaves:** Upright brown stems but bright red when young. Leaves large, mid-green and shiny and with red petioles.

**Panicles:** Rounded flat-topped panicles 100 x 100 mm, with 50% cover of sterile flowers. They open white but soon fade to a dull dusky purplish-pink. Fertile flowers white, and at the end of the season forming clusters of deep purplish red seed pods amongst the dusky red sepals.

**Overall assessment:** A very good compact cultivar for the small garden. In the RHS paniculata trials at Wisley their report said ‘Very Good’.

**Origins:** Imported from Japan, in 1989 by C R Sanders for the Rein & Mark Bulk Nursery. Originally believed to be a Hydrangea heteromalla due to its rather flattened inflorescence, but may be a hybrid between paniculata and heteromalla.

## STEMS

Colour 173b pale brown  
Diameter 6-7

## LEAVES

Size 100-120 x 60-70  
Q Value 1.7  
Serr.HxW 0.5—0.8 x 5-6  
Col T 138a mid green  
Col B 139a pale green  
Tex T almost smooth  
Tex B smooth  
Veins hairy top & bottom

## PANICLES

Size 120 x 120  
Q Value 1  
Internode 40  
Shape flat  
Ratio F:S 20:1  
% cover 50%

## PETIOLE

Length 20-25

## PEDUNCLE

Length 10-30

## STERILE FL

Diameter 30-35  
Bud col 155a white

## SEPALS

Number 4  
Q Value 1-1.2  
Overlap +1 to +5  
T col Aug 78b purplish red  
B col Aug 78b purplish red  
T col Sep 70a purplish red  
B col Sep 70a purplish red  
Misshape occasional  
Spots T yes  
Spots B no

## FERTILE FL

Bud col not seen  
Diameter

## STAMENS

Length  
Any pink

## CARPELS

Number

All measurements in mm  
except for the plant H & W

Q value = Length / Width

Colours = RHS colour chart

All stem data from just below  
the panicles.

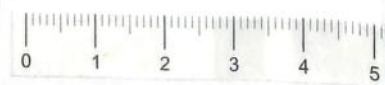


All photographs are from Hydrangea Derby and are copyright.

*Hydrangea paniculata* 'Dharuma' (Life Size at A4)

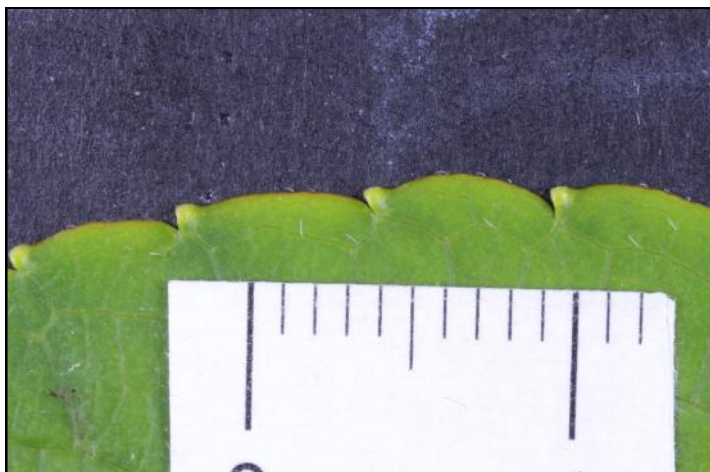
Date: Aug 14<sup>th</sup>

Accession: 773





*Hydrangea paniculata* 'Dharuma' Acc: 773



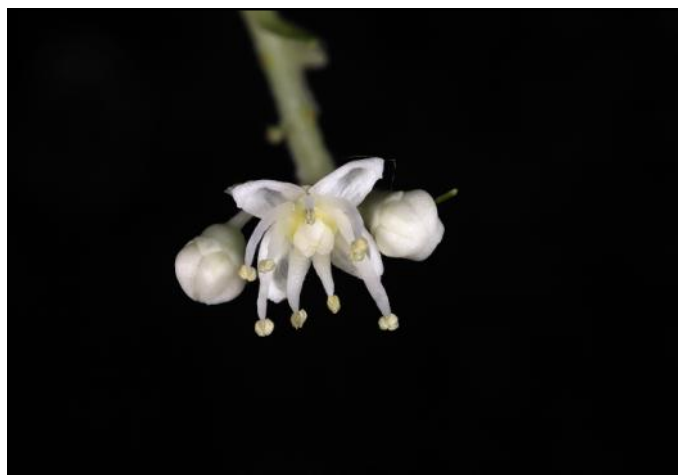
Leaf: Edge



Sterile Flower



Leaf: Top Surface



Fertile Flower



Leaf: Lower Surface



Stem



*Hydrangea paniculata* 'Dharuma' Acc: 773

