

Hydrangea paniculata 'Great Escape' Acc: 801

Synonyms: No synonyms found.

Awards: No awards found.

Patents: No patents found

Description:

Height x Width: 2.2 x 2 m

Habit: Upright spreading habit.

Stems & leaves: Strong reddish brown stems arching stems support the panicles well.

Leaves large mid-green, glossy leaves are quite attractive.

Panicles: Open panicles 250 x 150mm, with medium sized white sterile flowers covering the creamy white fertile flowers by about 20%. At maturity the sterile flowers hang down on long pedicels revealing dull pink backs to the sepals.

Overall assessment: With strong upright habit, but now superseded by modern cultivars

Origins: Introduced pre 1995 by Darthuizer Nurseries, in Boskoop in the Netherlands

STEMS

Colour 195a pale green
Diameter 7-8

LEAVES

Size 120-140 x 65-85
Q Value 1.6 - 1.8
Serr.HxW 0.5-1.2 x 2-4
Col T 137b dark green
Col B 138b pale green
Tex T smooth
Tex B almost smooth
Veins sparse hairs T&B

PANICLES

Size 300 x 120
Q Value 2.5
Internode
Shape poinjted
Ratio F:S 20:1
% cover 20%

PETIOLE

Length 15-20

PEDUNCLE

Length 20-50

STERILE FL

Diameter 30-40
Bud col 155a-58b wh-pink

SEPALS

Number 4
Q Value 1 - 1.2
Overlap +3 to +4
T col Aug 155a white
B col Aug 155a white
T col Sep 155aq white
B col Sep 155a white
Misshape rare
Spots T no
Spots B no

FERTILE FL

Bud col 155a-58b wh-pink
Diameter 14

STAMENS

Length 6
Any pink no

CARPELS

Number 3

All measurements in mm
except for the plant H & W

Q value = Length / Width

Colours = RHS colour chart

All stem data from just below
the panicles.

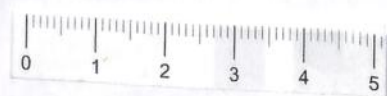


All photographs are from Hydrangea Derby and are copyright.

Hydrangea paniculata 'Great Escape' (Life Size at A4)

Date: July 8th

Accession: 801



Hydrangea paniculata 'Great Escape' Acc: 801



Leaf: Edge



Sterile Flower



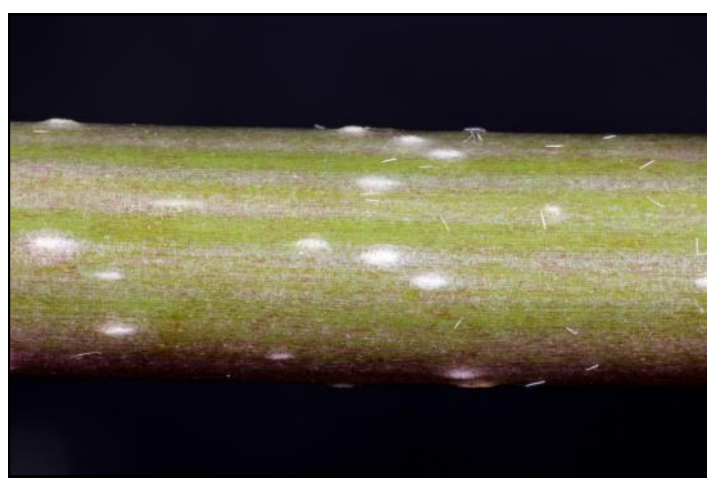
Leaf: Top Surface



Fertile Flower



Leaf: Lower Surface



Stem

Hydrangea paniculata 'Great Escape' Acc: 801

