

# Hydrangea paniculata 'Kyushu' Acc: 289

**Synonyms:** No synonyms found.

**Awards:** RHS - AGM, 1993.

**Patents:** No patents found.

**Description:**

**Height x Width:** 2 x 1.5 m

**Habit:** Narrow upright habit.

**Stems & leaves:** Strong brown upright stems with smooth shiny mid to dark-green neat leaves.

**Panicles:** Thin pointed open panicles 250 x 150 mm that sit at the top of the upright stems. They have medium sized white sterile flowers that stay white and cover the dense panicle of white fertile flowers by about 20%.

**Overall assessment:**

The smooth shiny leaves, thin pointed flowers and very upright habit make this a distinctive cultivar. It has the appearance of small white rockets shooting into the sky. Having more fertile florets than most other cultivars makes it very attractive to insects. In the RHS paniculata trials at Wisley Garden, their report said: 'Excellent'.

**Origins:** A distinctive plant collected from the Japanese island of Kyushu, and introduced by Collingwood Ingram in 1925 and named by his friend Lady Anne Berry and then distributed through Europe by Robert & Jelena De Belder, at the Kalmthout Arboretum in Belgium.

**STEMS**

Colour 138c pale green  
Diameter 5-6

**LEAVES**

Size 120-130 x 70-75  
Q Value 1.6  
Serr.HxW 1.2-2 x 3.5-6  
Col T 137a mid green  
Col B 138b pale green  
Tex T smooth glossy  
Tex B smooth  
Veins sl hairy B only

**PANICLES**

Size 150 x 120  
Q Value 1.2  
Internode 30  
Shape pointed thin  
Ratio F:S 50:1  
% cover 10%

**PETIOLE**

Length 15-20

**PEDUNCLE**

Length 10-30

**STERILE FL**

Diameter 15-40  
Bud col 155a white

**SEPALS**

Number 4  
Q Value 1 - 1.2  
Overlap -5 to +2  
T col Aug 155a white  
B col Aug 155a white  
T col Sep 155a white  
B col Sep 155a white  
Misshape occasional  
Spots T no  
Spots B no

**FERTILE FL**

Bud col 155a white, sl Pin  
Diameter 13

**STAMENS**

Length 10  
Any pink no

**CARPELS**

Number 3

All measurements in mm except for the plant H & W

Q value = Length / Width

Colours = RHS colour chart

All stem data from just below the panicles.



All Photo's Hydrangea Derby Acc: 289

*Hydrangea paniculata* 'Kyushu' (Life Size at A4)

Date: Aug 14<sup>th</sup>

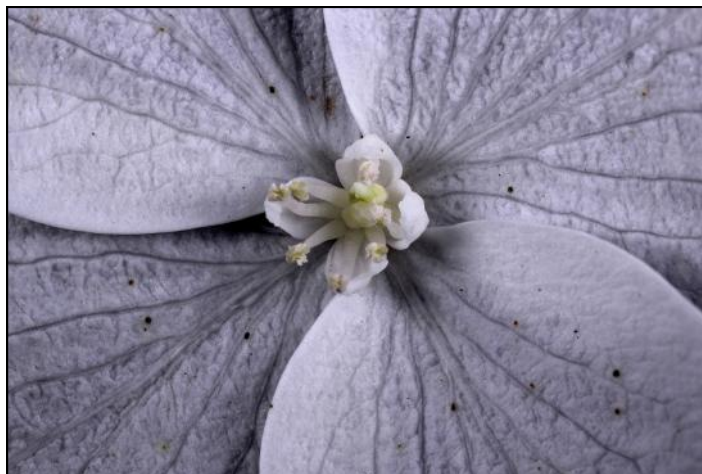
Accession: 289



*Hydrangea paniculata* 'Kyushu' Acc: 289



Leaf: Edge



Sterile Flower



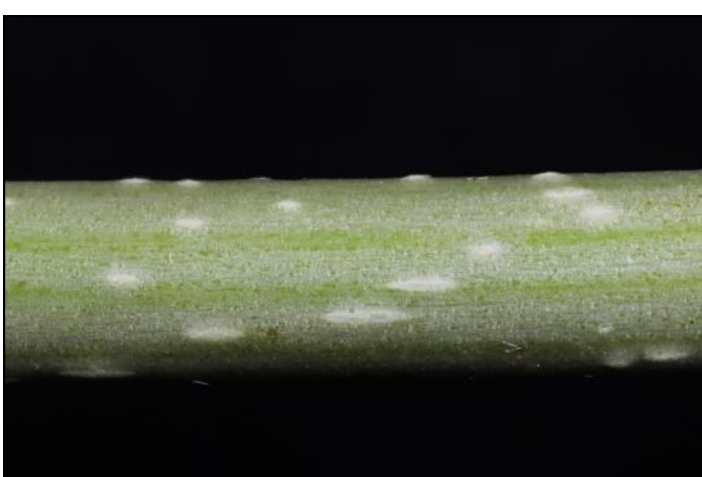
Leaf: Top Surface



Fertile Flower



Leaf: Lower Surface



Stem

*Hydrangea paniculata* 'Kyushu' Acc: 289

