

Hydrangea paniculata 'Papillon' Acc: 805

Synonyms: No synonyms found.

Awards: No awards found.

Patents: No patents found.

Description:

Height x Width: 2 x 2 m

Habit: Large spreading, arching habit

Stems & leaves: The thin brown stems arch out in all directions, with smooth, glossy mid-green leaves are reasonably attractive.

Panicles: With Open pointed panicles 250 x 200 mm, with 10% cover of white sterile flowers that hang down at maturity showing a dull pinkish reverse, and heavily spotted.. The creamy white fertile flowers open from pink buds.

Overall assessment: A pleasant but not a particularly impressive cultivar. The flowers are supposed to resemble small clouds of butterflies. Hence the name Papillon, the French word for butterfly.

Origins: Bred in 1970 by Robert & Jelena De Belder at the Kalmthout Arboretum in Belgium.

STEMS

Colour 195a pale green
Diameter 7-8

LEAVES

Size 120-160 x 60-90
Q Value 2
Serr.HxW 1-2 x 3-5.5
Col T 138a mid green
Col B 138c pale green
Tex T smooth
Tex B almost smooth
Veins occasional hairs

PANICLES

Size 250 x 200
Q Value 1.3
Internode
Shape pointed
Ratio F:S 50:1
% cover 10%

PETIOLE

Length 20-25

PEDUNCLE

Length 40-50

STERILE FL

Diameter 40-55
Bud col 58b pink

SEPALS

Number 4
Q Value 1 - 1.2
Overlap 0 to +3
T col Aug 155a white
B col Aug 155a white
T col Sep 155a white
B col Sep 155a white
Misshape occasional
Spots T no
Spots B no

FERTILE FL

Bud col 58b pink
Diameter 15

STAMENS

Length 7
Any pink no

CARPELS

Number 3

All measurements in mm
except for the plant H & W

Q value = Length / Width

Colours = RHS colour chart

All stem data from just below
the panicles.



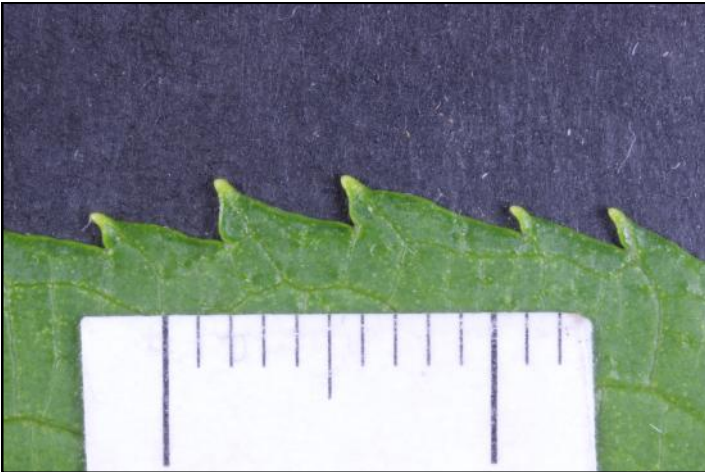
All photographs are from Hydrangea Derby and are copyright.

Hydrangea paniculata 'Papillon' (Life Size at A4)

Date: July 8th Accession: 805



Hydrangea paniculata 'Papillon' Acc: 805



Leaf: Edge



Sterile Flower



Leaf: Top Surface



Fertile Flower



Leaf: Lower Surface



Stem

Hydrangea paniculata 'Papillon' Acc: 805

