

Hydrangea paniculata 'Pink Diamond' ^{PBR} Acc: 223

Synonyms: *Interhydia*.

Awards: RHS - AGM 1993.

Patents: No patents found.

Description:

Height x Width: 2 x 1.5 m

Habit: Vigorous and outwardly arching.

Stems & leaves: Brown stems and large, coarse mid-green unattractive leaves.

Panicles: Large panicles 180 x 120 mm with around 80% cover of sterile flowers over small clusters of creamy white fertile flowers. The sterile flowers slowly turn pink as they age finishing a dull dusky pink around reddish seed capsules

Overall assessment: A large vigorous cultivar and one of the first pink cultivars to be bred. It is still a popular cultivar in the nursery trade; however, it has now been superseded by many new cultivars. In the RHS paniculata trials at Wisley their report said: 'This plant showed sensitivity to an apparent mineral deficiency on the trial site, yet is known to perform well, without leaf scorch, elsewhere. The late season colour was magnificent; the dense panicles developing a deep, glowing pink which made the plants stand out from those around them'.

Origins: Bred in 1980 by Robert & Jelena De Belder at the Kalmthout Arboretum in Belgium from a seedling from 'Unique'.

STEMS

Colour 174b pale brown
Diameter 7-8

LEAVES

Size 140-180 x 80-110
Q Value 1.7 - 1.8
Serr.HxW 0.8-1.5 x 4-8
Col T 137a mid green
Col B 138b pale green
Tex T almost smooth
Tex B slightly hairy
Veins hairy top & bottom

PANICLES

Size 300 x 200
Q Value 1.5
Internode 80
Shape pointed
Ratio F:S 20:1
% cover 80%

PETIOLE

Length 15-20

PEDUNCLE

Length 30-60

STERILE FL

Diameter 30-50
Bud col 155a-58b wh-pink

SEPALS

Number 4-7 (most 5)
Q Value 1 - 1.2
Overlap +2 to +5
T col Aug 155a-58c wh-pink
B col Aug 155a white
T col Sep 58c pink
B col Sep 58c pink
Misshape frequent
Spots T yes
Spots B no

FERTILE FL

Bud col 155a-58c wh-pink
Diameter 15

STAMENS

Length 9
Any pink yes

CARPELS

Number 3

All measurements in mm
except for the plant H & W

Q value = Length / Width

Colours = RHS colour chart

All stem data from just below
the panicles.



All photographs are from Hydrangea Derby and are copyright.

Hydrangea paniculata 'Pink Diamond' (Life Size at A4)

Date: Aug 15th

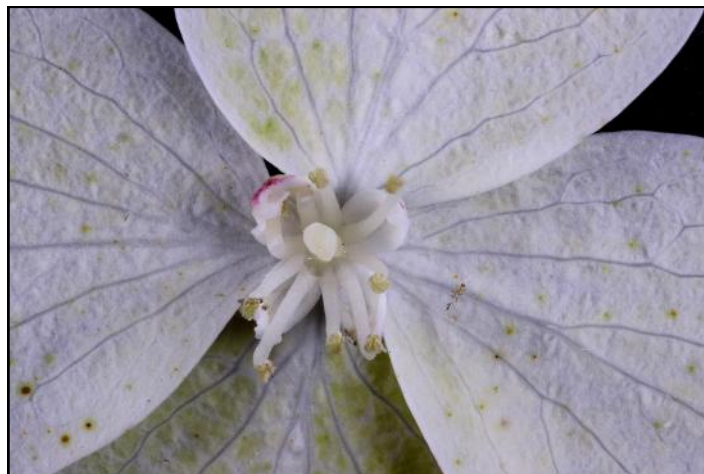
Accession: 223



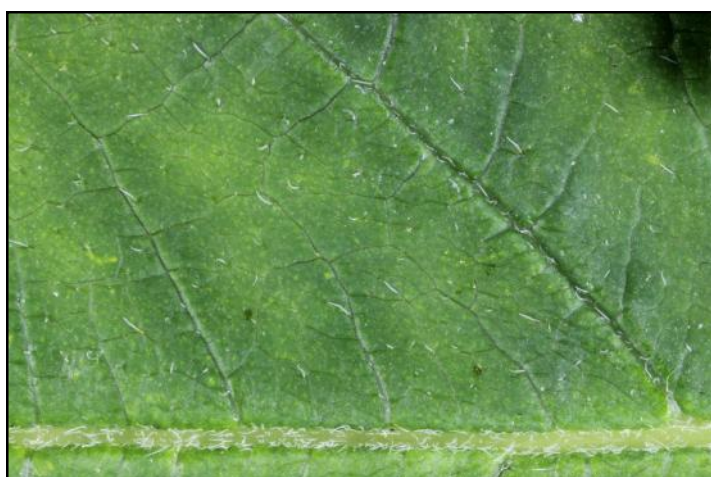
Hydrangea paniculata 'Pink Diamond' Acc: 223



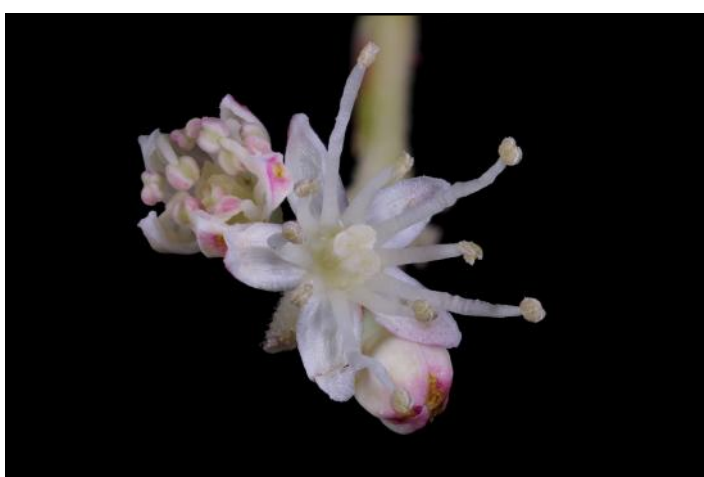
Leaf: Edge



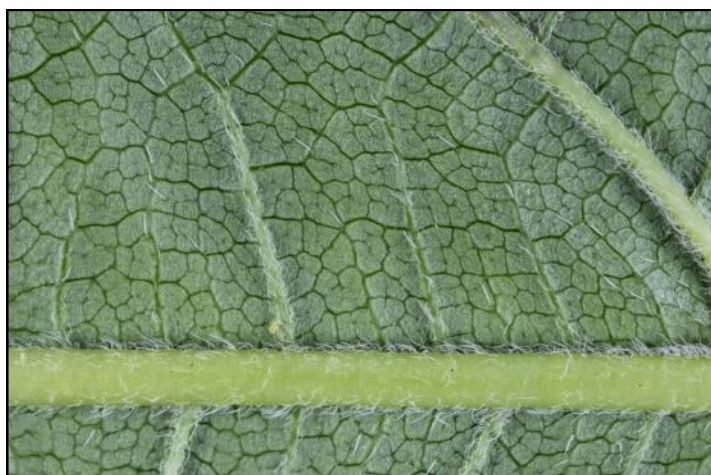
Sterile Flower



Leaf: Top Surface



Fertile Flower



Leaf: Lower Surface



Stem

Hydrangea paniculata 'Pink Diamond' Acc: 223

