

Hydrangea paniculata 'Sherwood' Acc: 804

Synonyms: No synonyms found.

Awards: No awards found.

Patents: No patents found.

Description:

Height x Width: 2 x 2 m

Habit: Upright at first then arching outwards.

Stems & leaves: Long reddish-brown arching stems and small mid-green shiny leaves.

Panicles: Very open, loose panicles are 250 x 150 mm with small clusters of creamy-white fertile flowers and a 10% covering of white sterile slightly dished flowers on long pedicels, hanging down at the end of the season showing a dull pink reverse. Late flowering and perhaps not at its best until September. In the RHS paniculata trials at Wisley, their report said: 'Good'

Overall assessment: It has no special merit, except for its late flowering.

Origins: Bred by Sherwood Cottage Nursery, in Devon.

STEMS

Colour 182b pink-green
Diameter 6-7

LEAVES

Size 100-130 x 60-80
Q Value 1.4 - 1.7
Serr.HxW 1 x 4-5
Col T 138a mid green
Col B 138c pale green
Tex T almost smooth
Tex B smooth
Veins hairy top & bottom

PANICLES

Size 300 x 150
Q Value 2
Internode 40
Shape pointed
Ratio F:S 50:1
% cover 10%

PETIOLE

Length 20-30

PEDUNCLE

Length 20-40

STERILE FL

Diameter 30-40
Bud col 155a white

SEPALS

Number 3-4
Q Value 1-1.4
Overlap +2 to +6
T col Aug 155a white
B col Aug 155a white
T col Sep 155a white
B col Sep 155a white
Misshape rare
Spots T no
Spots B no

FERTILE FL

Bud col 155a-58c wh-pink
Diameter 14

STAMENS

Length 9
Any pink no

CARPELS

Number 3

All measurements in mm
except for the plant H & W

Q value = Length / Width

Colours = RHS colour chart

All stem data from just below
the panicles.

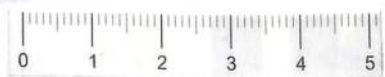


All photographs are from Hydrangea Derby and are copyright.

Hydrangea paniculata 'Sherwood' (Life Size at A4)

Date: Aug 15th

Accession: 804



Hydrangea paniculata 'Sherwood' Acc: 804



Leaf: Edge



Sterile Flower



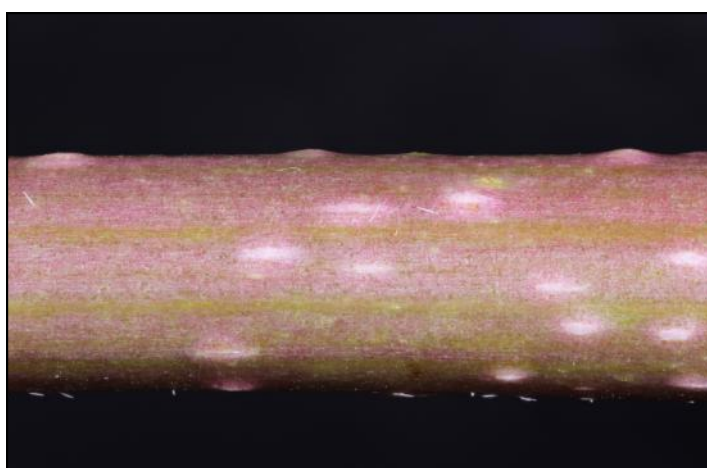
Leaf: Top Surface



Fertile Flower



Leaf: Lower Surface



Stem

Hydrangea paniculata ‘ Acc:

