

Hydrangea paniculata 'Silver Dollar' Acc: 660

Synonyms: No synonyms found.

Awards: RHS - AGM 2008.

Patents: No patents found.

Description:

Height x Width: 1.5 x 1.5 m

Habit: Compact and upright.

Stems & leaves: Sturdy reddish-brown stems and large flat mid-green leaves are unattractive.

Panicles: Large 300mm x 200 mm bluntly conical upright panicles. Fertile flowers sparse, white opening from pink buds With 100% cover of sterile flowers that open a yellowish green and soon turn white and then mature to a pale shell pink where facing the sun.

Overall assessment: An outstanding compact cultivar with huge white flowers which slowly turn pink. In the RHS paniculata trials at Wisley; their report said: 'Distinct compact habit and a very dense panicle'.

Origins: Bred in 1990 by Pieter Zwijnenburg, Boskoop in the Netherlands.

STEMS

Colour 59c red
Diameter 7-8

LEAVES

Size 110-120 x 80-90
Q Value 1.1 - 1.4
Serr.HxW 1-2 x 2.5-5.5
Col T 138a mid green
Col B 139d pale green
Tex T almost smooth
Tex B smooth
Veins hair top & bottom

PANICLES

Size 300 x 180
Q Value 1.7
Internode 60
Shape rounded
Ratio F:S 1:10
% cover 100%

PETIOLE

Length 15-20

PEDUNCLE

Length 15-65

STERILE FL

Diameter 20-40
Bud col 155a white

SEPALS

Number 4-5
Q Value 1 - 1.2
Overlap +3 to +5
T col Aug 155a white
B col Aug 155a white
T col Sep 58b pink
B col Sep 58b pink
Misshape frequent
Spots T no
Spots B no

FERTILE FL

Bud col 155a-58c wh-pink
Diameter 12

STAMENS

Length 6
Any pink no

CARPELS

Number 3

All measurements in mm
except for the plant H & W

Q value = Length / Width

Colours = RHS colour chart

All stem data from just below
the panicles.



All photographs are from Hydrangea Derby and are copyright.

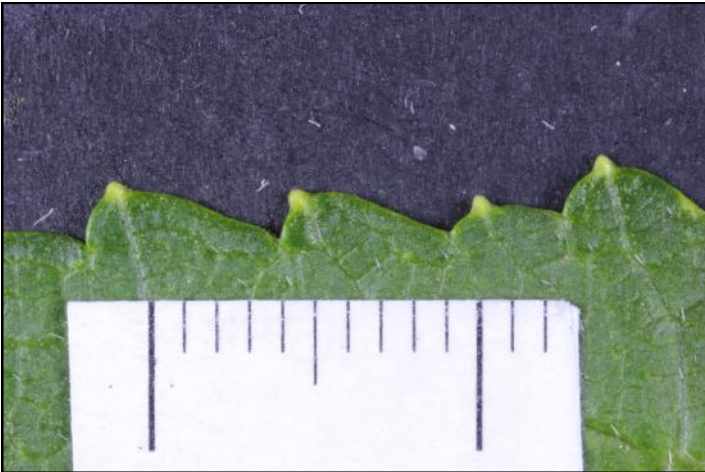
Hydrangea paniculata 'Silver Dollar' (Life Size at A4)

Date: Aug 14th

Accession: 660



Hydrangea paniculata 'Silver Dollar' Acc: 660



Leaf: Edge



Sterile Flower



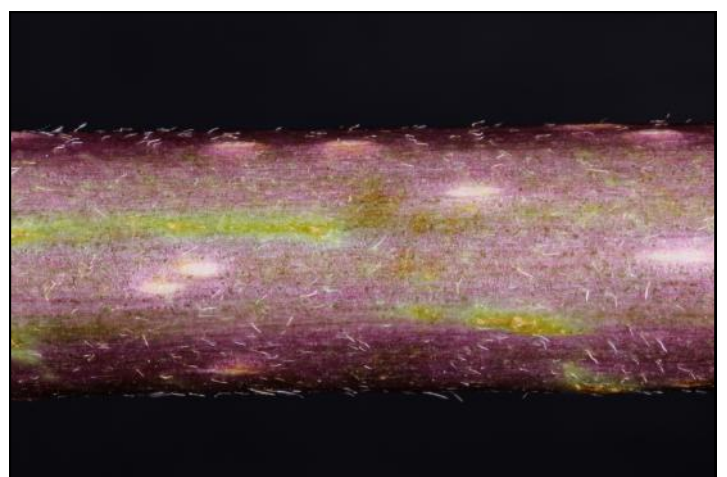
Leaf: Top Surface



Fertile Flower



Leaf: Lower Surface



Stem

Hydrangea paniculata 'Silver Dollar' Acc: 660

