

Hydrangea paniculata 'Taiwan Form' Acc: 796

Synonyms: B&SJW 3082

Awards: No awards found.

Patents: No patents found.

Description:

Height x Width: 2.5 x 1.5 m

Habit: Upright habit but arching outwards.

Stems & leaves: Thin reddish brown stems that arch outwards and small very narrow mid-green attractive leaves.

Panicles: Very open loose panicles 200 x 120mm, with the white fertile flowers scattered evenly throughout. The white sterile flowers cover around 10% and have long thin sepals and long pedicels and turn slightly dusky ping at the end of the season

Overall assessment: The open panicles and scattered sterile flowers give a pleasant dainty appearance. At the RHS paniculata trials at Wisley, their report said: 'Good'.

Origins: Collected in the wild in Taiwan by Crug Farm Plants.

STEMS

Colour 174b pale brown
Diameter 5-6

LEAVES

Size 110-130 x 50-60
Q Value 2.2 - 2.6
Serr.HxW 0.5-0.8 x 2-4
Col T 138a mid green
Col B 138c pale green
Tex T slightly hairy
Tex B slightly hairy
Veins hairy top & bottom

PANICLES

Size 260 x 220
Q Value 1.2
Internode
Shape pointed
Ratio F:S 30:1
% cover 10%

PETIOLE

Length 15-20

PEDUNCLE

Length 20-40

STERILE FL

Diameter 25-35
Bud col 155a white

SEPALS

Number 4
Q Value 1.8
Overlap -2 to -3
T col Aug 155a white
B col Aug 155a white
T col Sep 155a white
B col Sep 155a white
Misshape occasional
Spots T no
Spots B no

FERTILE FL

Bud col 155a white
Diameter 10

STAMENS

Length 6
Any pink no

CARPELS

Number 3

All measurements in mm
except for the plant H & W

Q value = Length / Width

Colours = RHS colour chart

All stem data from just below
the panicles.



All photographs are from Hydrangea Derby and are copyright.

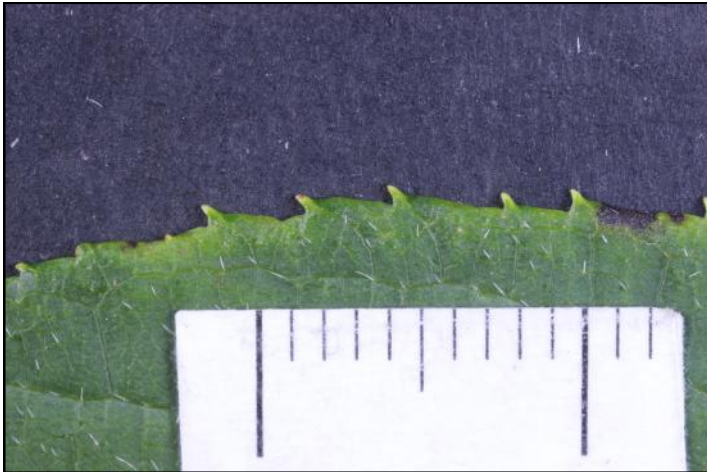
Hydrangea paniculata 'Taiwan Form' (Life Size at A4)

Date: Aug 10th

Accession: 796



Hydrangea paniculata 'Taiwan Form' Acc: 796



Leaf: Edge



Sterile Flower



Leaf: Top Surface



Fertile Flower



Leaf: Lower Surface



Stem

Hydrangea paniculata 'Taiwan Form' Acc: 796

