

Hydrangea paniculata 'Vera' Acc: 39

Synonyms: No synonyms found.

Awards: No awards found.

Patents: No patents found.

Description:

Height x Width: 2.5 x 2 m

Habit: Upright.

Stems & leaves: Sturdy reddish-brown stems and large mid-green leaves.

Panicles: An even distribution of bright white sterile flowers and about 20% cover of large white sterile flowers on long pedicels.

Overall assessment: An attractive cultivar, but now superseded by modern cultivars.

Origins: Bred before 1900 by De Kort, who preceded Robert and Robert & Jelena De Belder at Arboretum Kalmthout

Notes:

Cor Van Gelderen suggests that the original 'Vera' is an old cultivar probably no longer in cultivation. If so we do not know what has been grown as 'Vera' in recent years. At Hydrangea Derby there appear to be some differences between the two accessions.

STEMS

Colour 174b pale brown
Diameter 7-8

LEAVES

Size 140-220 x 90-120
Q Value 1.5 - 1.8
Serr.HxW 1.2 x 4-5.5
Col T 137a mid green
Col B 138b pale green
Tex T slightly hairy
Tex B slightly hairy
Veins hairy top & bottom

PANICLES

Size 300 x 180
Q Value 1.7
Internode 60
Shape pointed
Ratio F:S 20:1
% cover 20%

PETIOLE

Length 15-20

PEDUNCLE

Length 20-40

STERILE FL

Diameter 30-50
Bud col 155a-58c wh-pink

SEPALS

Number 4-5
Q Value 1 - 1.4
Overlap +3 to +6
T col Aug 155a white
B col Aug 155a white
T col Sep 155a white
B col Sep 155a white
Misshape frequent
Spots T no
Spots B no

FERTILE FL

Bud col 155a-58c wh-pink
Diameter 15

STAMENS

Length 8
Any pink no

CARPELS

Number 3

All measurements in mm
except for the plant H & W

Q value = Length / Width

Colours = RHS colour chart

All stem data from just below
the panicles.



All photographs are from Hydrangea Derby and are copyright.

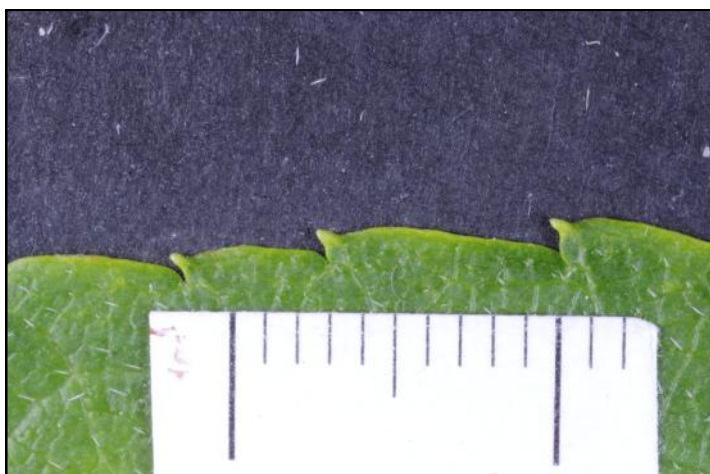
Hydrangea paniculata 'Vera' (Life Size at A4)

Date: Aug 15th

Accession: 39



Hydrangea paniculata 'Vera' Acc: 39



Leaf: Edge



Sterile Flower



Leaf: Top Surface



Fertile Flower



Leaf: Lower Surface



Stem

Hydrangea paniculata 'Vera' Acc: 39

