

Hydrangea paniculata 'Early Sensation'^{PBR} Acc: 816

Synonyms: 'SMHPLQF', *Bulk & Quick Fire*TM.

Awards: No awards found.

Patents: US Patent **PP16812**, July 11, 2014. PLP 11097692 Start: 2006-07-11

PBR: 20032125 Start: 2006-09-25. & 04-4426 Start: 2008-11-21

Description:

Height x Width: 1.5 x 1.5 m

Habit: A compact early flowering cultivar making a rounded bush.

Stems & leaves: The young upright stems are red when young then becoming brown. The leaves are mid-green glossy and are neatly arranged on the stems.

Panicles: The panicles are rounded and flattened, 120 x 120cm with a 50% cover of white sterile flowers that mature to pale pink and then progress to deep dusky purplish red, often showing every shade from white to deep red on the same panicles. The fertile flowers are creamy white and add to the overall effect. Also with clusters of dull red seed pods at the end of the season.

Overall assessment: A medium sized early flowering cultivar with interesting colour changes in the flowers. At the RHS paniculata trials at Wisley; their report said 'Very Good'.

Origins: A cross between 'Dharuma and Pink Diamond, made by Rein Bulk in Boskoop, Holland in 2009.

STEMS

Colour 174b—182a red
Diameter 5-6

LEAVES

Size 90-130 x 60-80
Q Value 1.8 - 2.1
Serr.HxW 0.5-1 x 3-5
Col T 137b mid green
Col B 138b pale green
Tex T occasional hairs
Tex B occasional hairs
Veins hairy top & bottom

PANICLES

Size 120 x 180
Q Value 1.5
Internode
Shape rounded
Ratio F:S 20:1
% cover 50%

PETIOLE

Length 18-20

PEDUNCLE

Length 30

STERILE FL

Diameter 30-80
Bud col 155a white

SEPALS

Number 4
Q Value 1.1
Overlap +2 to +3
T col Aug 155a - 62a wh-pin
B col Aug 155a white
T col Sep 58b pink
B col Sep 58b pink
Misshape occasional
Spots T yes
Spots B no

FERTILE FL

Bud col 155a white
Diameter 13

STAMENS

Length 7
Any pink no

CARPELS

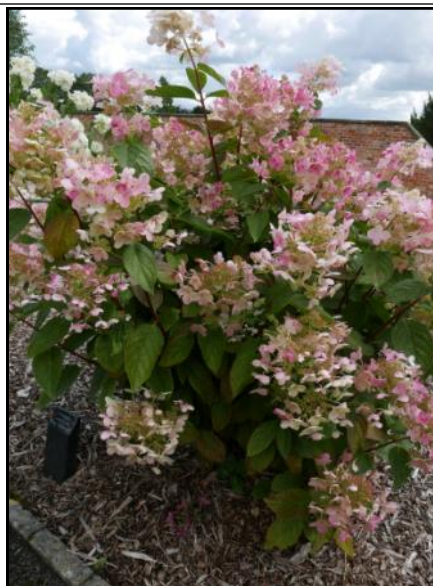
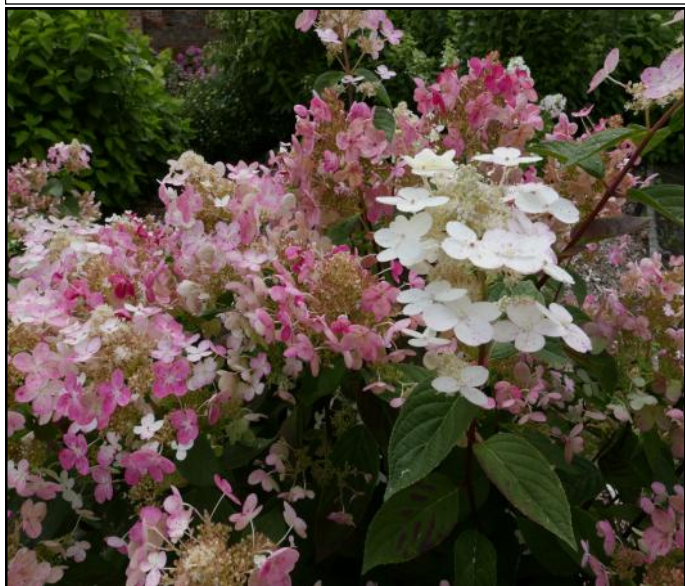
Number 3

All measurements in mm
except for the plant H & W

Q value = Length / Width

Colours = RHS colour chart

All stem data from just below
the panicles.



All photographs are from Hydrangea Derby and are copyright.

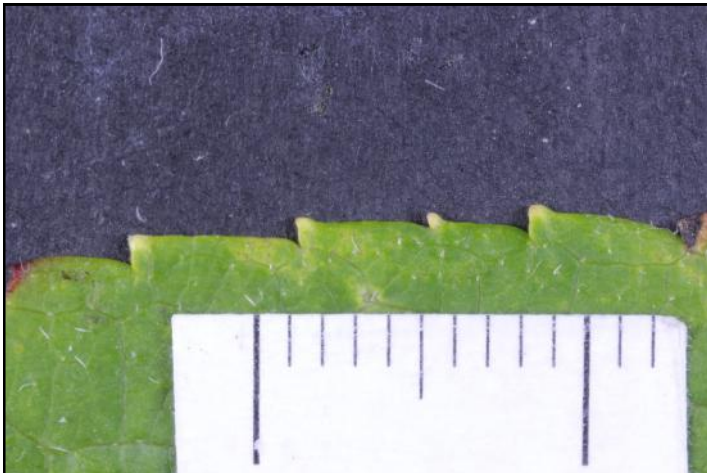
Hydrangea paniculata 'Early Sensation' (Life Size at A4)

Date: July 29th

Accession: 816



Hydrangea paniculata 'Early Sensation' Acc: 816



Leaf: Edge



Sterile Flower



Leaf: Top Surface



Fertile Flower



Leaf: Lower Surface



Stem

Hydrangea paniculata 'Early Sensation' Acc: 816

