

# Hydrangea paniculata 'Magical Moonlight'<sup>PBR</sup> Acc: 1281

**Synonyms:** 'Kolmagimo'.

**Awards:** No awards found.

**Patents:** US Patent **PP18438**, January 15, 2008. PLP 11499810, Start: 2008-01-15

**PBR:** 20052039, Start: 2008-08-25

## **Description:**

**Height x Width:** 2 x 1.5 m

**Habit:** Compact and upright.

**Stems & leaves:** Thin reddish brown arching stems, and mid-green unattractive leaves.

**Panicles:** Enormous (40 x 25cm) dense panicles with the sterile flowers packed in tightly together giving 100% cover of the panicle. They start out green and slowly turning white, and then remaining mostly white, but with tiny traces of pink at the end of the season. They are packed so tight that the base of the panicles often bulges out to form lumpy outgrowths of sterile flowers. However, they can be so heavy that the thin stems struggle to take their weight with the outer stems often collapsing under the weight, so ideally they need some support.

**Overall assessment:** Amazing huge dense panicles, but too heavy for the stems, and even when supported some might think a little too big.

**Origins:** This cultivar originated from a cross-pollination made in 1999 by Kolster BV at Boskoop in the Netherlands from two unnamed selections of Hydrangea paniculata

## **STEMS**

Colour 58a red

Diameter 6-7

## **LEAVES**

Size 85-100 x 60-70

Q Value 1.5

serr.HxW 2 x 5-10

Col T 138a mid green

Col B 139d pale green

Tex T smooth

Tex B smooth

Veins sl hairy T & B

## **PANICLES**

Size 300 x 200

Q Value 1.5

Internode

Shape rounded

Ratio F:S 1:10

% cover 100%

## **PETIOLE**

Length 10-15

## **PEDUNCLE**

Length 20-40

## **STERILE FL**

Diameter 25-40

Bud col 150d pale green

## **SEPALS**

Number 6-7

Q Value 1 - 1.1

Overlap +2 to +5

T col Aug 150d pale green

B col Aug 155a white

T col Sep 155a white

B col Sep 155a white

Misshape frequent

Spots T no

Spots B no

## **FERTILE FL**

Bud col 150d pale green

Diameter 11

## **STAMENS**

Length 6

Any pink no

## **CARPELS**

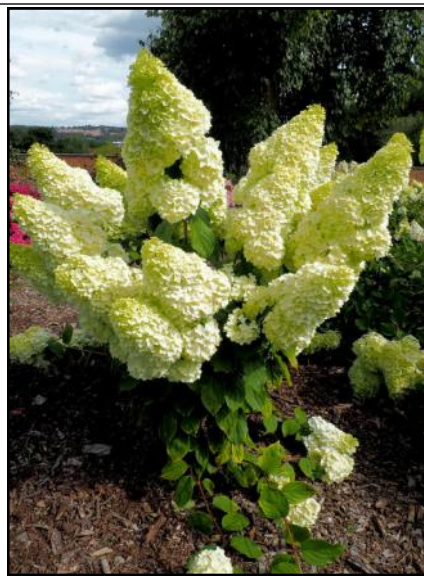
Number 3

All measurements in mm  
except for the plant H & W

Q value = Length / Width

Colours = RHS colour chart

All stem data from just below  
the panicles.

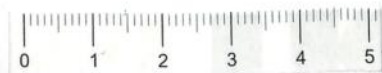


All photographs are from Hydrangea Derby and are copyright.

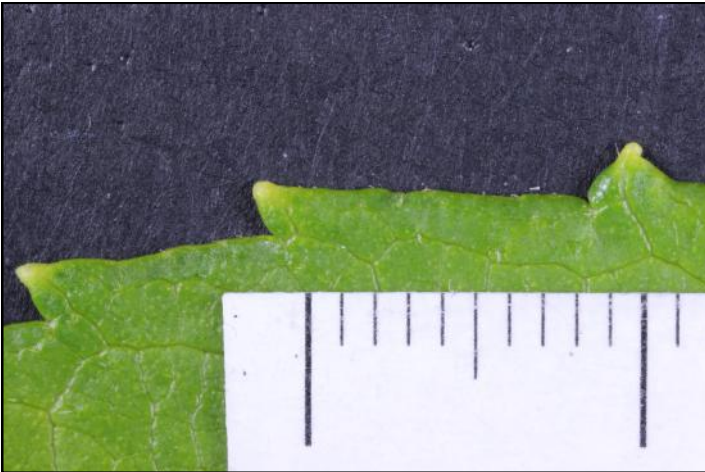
*Hydrangea paniculata* 'Magical Moonlight' (Life Size at A4)

Date: August 7<sup>th</sup>

Accession: 1281



*Hydrangea paniculata* 'Magical Moonlight' Acc: 1281



Leaf: Edge



Sterile Flower



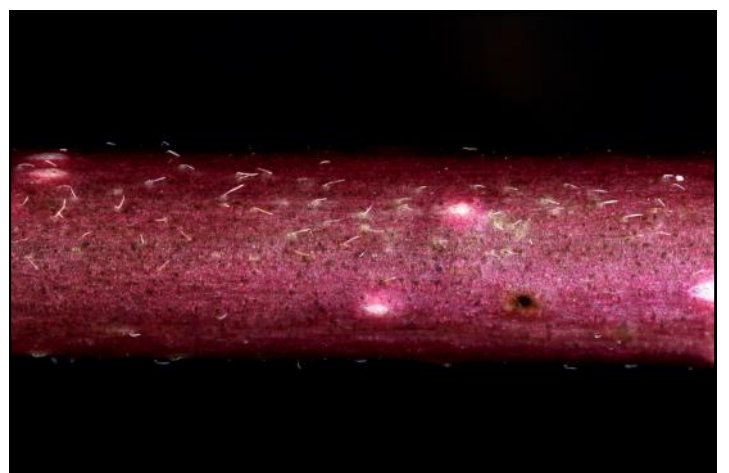
Leaf: Top Surface



Fertile Flower



Leaf: Lower Surface



Stem

*Hydrangea paniculata* 'Magical Moonlight' Acc: 1291

