

Hydrangea paniculata 'Shikoku Flash'^{PBR} Acc 1371

Synonyms: 'Yuki gessho'.

Awards: No awards found.

Patents: US Patent PP15624.

Description:

Height: Up to 2m.

Habit: Upright habit.

Stems & leaves: Reddish-brown stems and pale green/white mottled leaves.

Panicles: Small panicles of white flowers, sometimes fading to pink.

Overall assessment: An interesting cultivar. However, the variegation is not to everyone's taste but variegation in *Hydrangea paniculata* is very rare.

Origins: This cultivar was discovered as a chance seedling in a controlled planting of unnamed *paniculata* by Masato Yokoi at Kawaguchi in Japan in 2005, and then grown at the Saitama Prefecture, in Japan, where it was confirmed that the variegation was stable and transmitted to succeeding generations.

UK Plant Finder - Not listed.

STEMS

Colour 161C - 51B Gr/R
Diameter 3-8

LEAVES

Size 80-110 x 40-65
Q Value 1.2—1.5
Serr.HxL 1-2 x 3-6
Col T Variegated
Col B 138C Pale Green
Tex T Sl. Hairy
Tex B Sl. Hairy
Veins Hairy T&B

PANICLES

Size 120-120
Q Value 1
Internode 35
Shape Broad Pointed
Ratio F:S 1:10
% cover 10

PETIOLE

Length 15-20

PEDUNCLE

Length 20-30

STERILE FL

Diameter 20-30
Bud col 155A White

SEPALS

Number 4-5
Q Value 1-1.3
Overlap 2-5
T col Aug 155A White
B col Aug 1 55A White
T col Sep 155A White
B col Sep 155A White
Misshape Frequent
Spots T No
Spots B No

FERTILE FL

Bud col 155A White
Diameter 8

STAMENS

Length 3-5
Any pink No

CARPELS

Number 3

All measurements in mm
except for the plant H & W

Q value = Length / Width

Colours = RHS colour chart

All stem data from just below
the panicles.



All photographs are from Hydrangea Derby and are copyright.

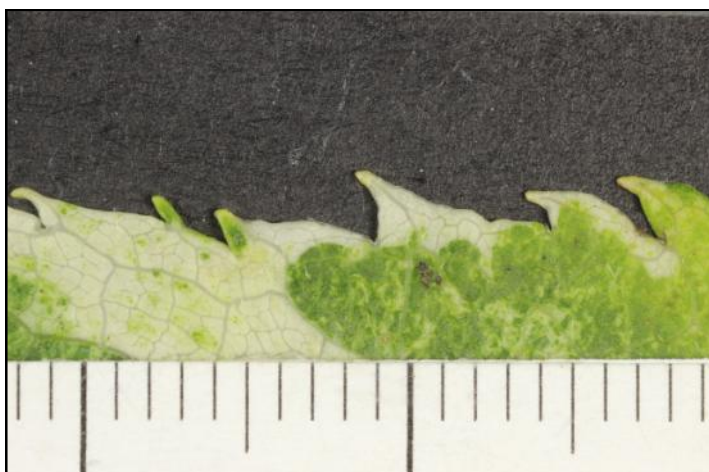
Hydrangea paniculata 'The Shikohu Flash' (Life Size at A4)

Date: July 14th

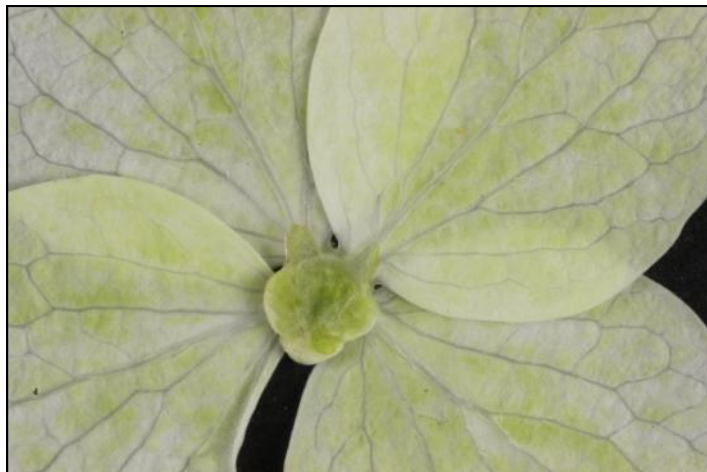
Accession: 1371



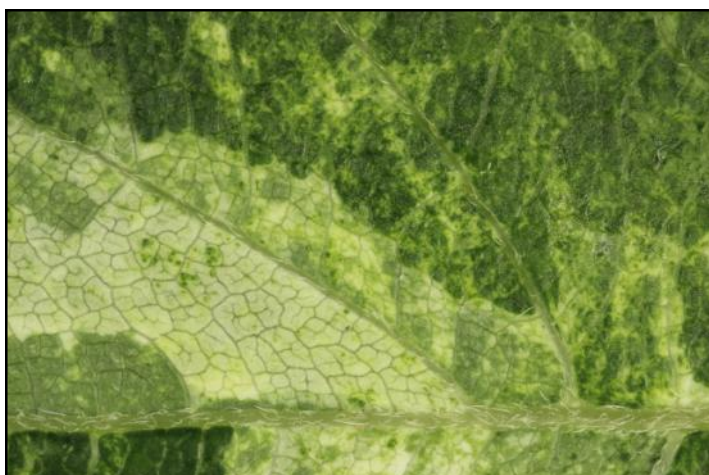
Hydrangea paniculata 'Shikohu Flash' Acc: 1371



Leaf: Edge



Sterile Flower



Leaf: Top Surface



Fertile Flower



Leaf: Lower Surface



Stem

Hydrangea paniculata 'Shikohu Flash' Acc: 1371

