

Hydrangea paniculata 'Tardiva Compacta' 791

Synonyms: *Pee Wee* [The Tardiva form of Pee Wee, not the Grandiflora form of Pee Wee].

Awards: No awards found.

Patents: No patents found.

Description:

Height x Width: 2.2 x 1.5 m

Habit: Compact and upright.

Stems & leaves: Upright brown arching stems with very large dark green glossy leaves

Panicles: Long and thin 200 x 150mm, with 50% cover of large white sterile flowers, fading to pink on the reverse of sepals at the end of the season, while front of sepals becomes heavily spotted with brown spots. Fertile flowers white from pink buds.

Overall assessment: With the same impact of Tarvida but on a more compact plant.

NOTE: There is also a compact form of paniculata 'Grandiflora' also named Wee Pee, as well as Hydrangea quercifolia Pee Wee.

Origins: Origins not ascertained.

STEMS

Colour 174b pale brown
Diameter 7-8

LEAVES

Size 130-190 x 90-100
Q Value 1.6 - 2
Serr.HxW 0.5-1.5 x 4-8
Col T 137a mid green
Col B 137c pale green
Tex T slightly hairy
Tex B smooth
Veins hairy top & bottom

PANICLES

Size 350 x 200
Q Value 1.8
Internode
Shape pointed
Ratio F:S 30:1
% cover 50%

PETIOLE

Length 15-20

PEDUNCLE

Length 25-50

STERILE FL

Diameter 20-50
Bud col 155a-58b wh-pink

SEPALS

Number 4-5
Q Value 1 - 1.2
Overlap +3 to +6
T col Aug 155a white
B col Aug 155a white
T col Sep 155a white
B col Sep 155a white
Misshape occasional
Spots T yes
Spots B no

FERTILE FL

Bud col 155a-58b wh-pink
Diameter 15

STAMENS

Length 7
Any pink no

CARPELS

Number 3

All measurements in mm
except for the plant H & W

Q value = Length / Width

Colours = RHS colour chart

All stem data from just below
the panicles.

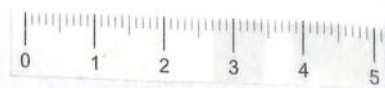


All photographs are from Hydrangea Derby and are copyright.

Hydrangea paniculata 'Pee Wee' (Life Size at A4)

Date: Aug 10th

Accession: 791



Hydrangea paniculata 'Tardiva Compacta' Acc: 791



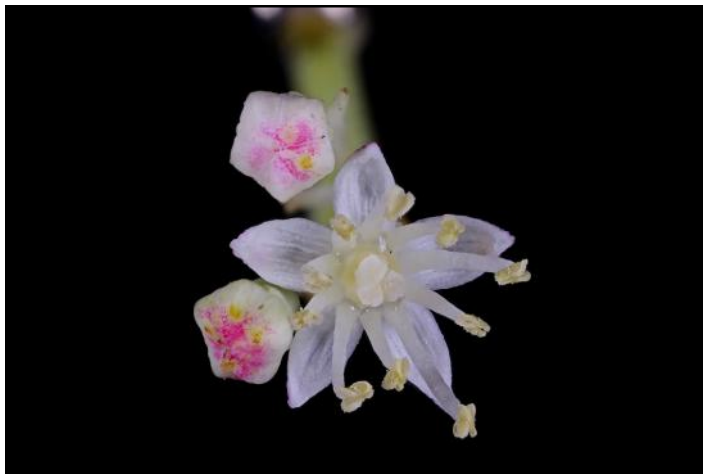
Leaf: Edge



Sterile Flower



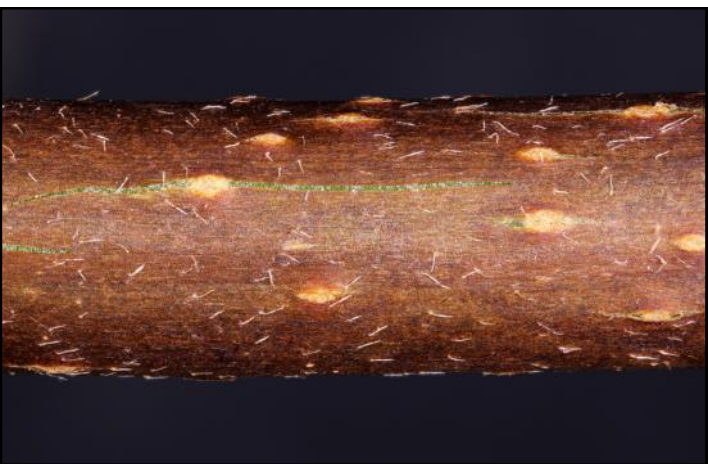
Leaf: Top Surface



Fertile Flower



Leaf: Lower Surface



Stem

Hydrangea paniculata 'Tardiva Compacta' Acc: 791

