

Hydrangea paniculata 'Rastede' Acc 1376

Synonyms: No synonyms found.

Awards: No awards found.

Patents: No patents found.

Description:

Height: Up to 1.5m.

Habit: Upright arching habit.

Stems & leaves: The thin brown stems tend to arch outward with the weight of the panicles.

Panicles: Blunt-cone shaped panicles with a 100% cover of sterile flowers that start out green and slowly turn to white and mature pinkish in a similar fashion to 'Limelight'.

Overall assessment: A good cultivar but no better than the similar and readily available 'Limelight'.

Origins: Origins not ascertained.

Nurseries: No patents found:

UK Plant Finder - Not listed.

STEMS

Colour brown—green
Diameter 5

LEAVES

Size 60-70 x 35-40
Q Value 1.5-1.8
Serr.HxW 0.1-1 x 2.5-3.5
Col T 138a green
Col B 138c p green
Tex T sl hairy
Tex B sl hairy
Veins hairy T&B

PANICLES

Size 160 x 160
Q Value 1
Internode 25
Shape rounded
Ratio F:S 2:1
% cover 100

PETIOLE

Length 15-20

PEDUNCLE

Length 20

STERILE FL

Diameter 30-42
Bud col 155a white

SEPALS

Number 4
Q Value 1.3-1.8
Overlap 0 to -2
T col Aug 145d p green
B col Aug 145d p green
T col Sep
B col Sep
Misshape occasional
Spots T no
Spots B no

FERTILE FL

Bud col 155a white
Diameter 8

STAMENS

Length 5
Any pink no

CARPELS

Number 2-3

All measurements in mm
except for the plant H & W

Q value = Length / Width

Colours = RHS colour chart

All stem data from just below
the panicles.



All photographs are from Hydrangea Derby and are copyright.

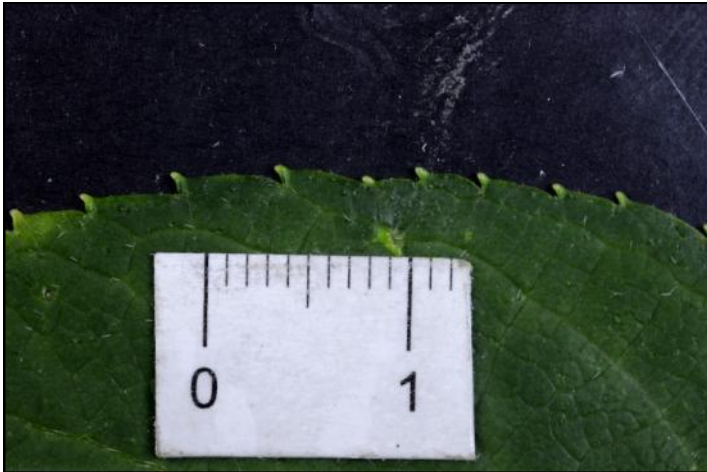
Hydrangea paniculata 'Rastede' (Life Size at A4)

Date: Aug 2nd

Accession: 1376



Hydrangea paniculata 'Rastede' Acc: 1376



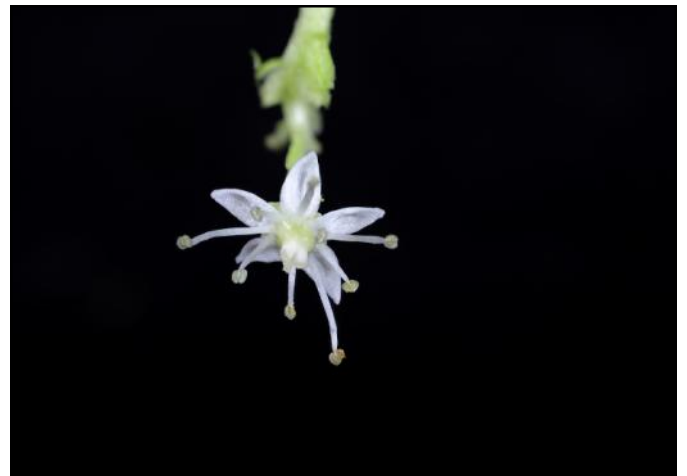
Leaf: Edge



Sterile Flower



Leaf: Top Surface



Fertile Flower



Leaf: Lower Surface



Stem

Hydrangea paniculata 'Rastede' Acc: 1376

